

# Soft Toric contact lens fitting

WHAT A CL PRACTITIONER  
SHOULD KNOW .....

- Soft Toric Contact Lens
- Stabilization????
- Preliminary assessments
  - Accurate refraction and axis tolerance
  - Slit Lamp examination
  - Fundus examination
  - HVID
  - Keratometry values
  - Pupil diameter
  - Tear film evaluation

# Preliminary assessments



# Contact Lens Trial

- Initial lens
- Base curve
- Power
- Total Diameter
- Eg : Keratometry (K av) = 7.50mm  
B.C = 8.30/8.50 mm  
Ocular refraction = -3.00/-1.00 x 180  
HVID = 12 mm , TD = 14mm

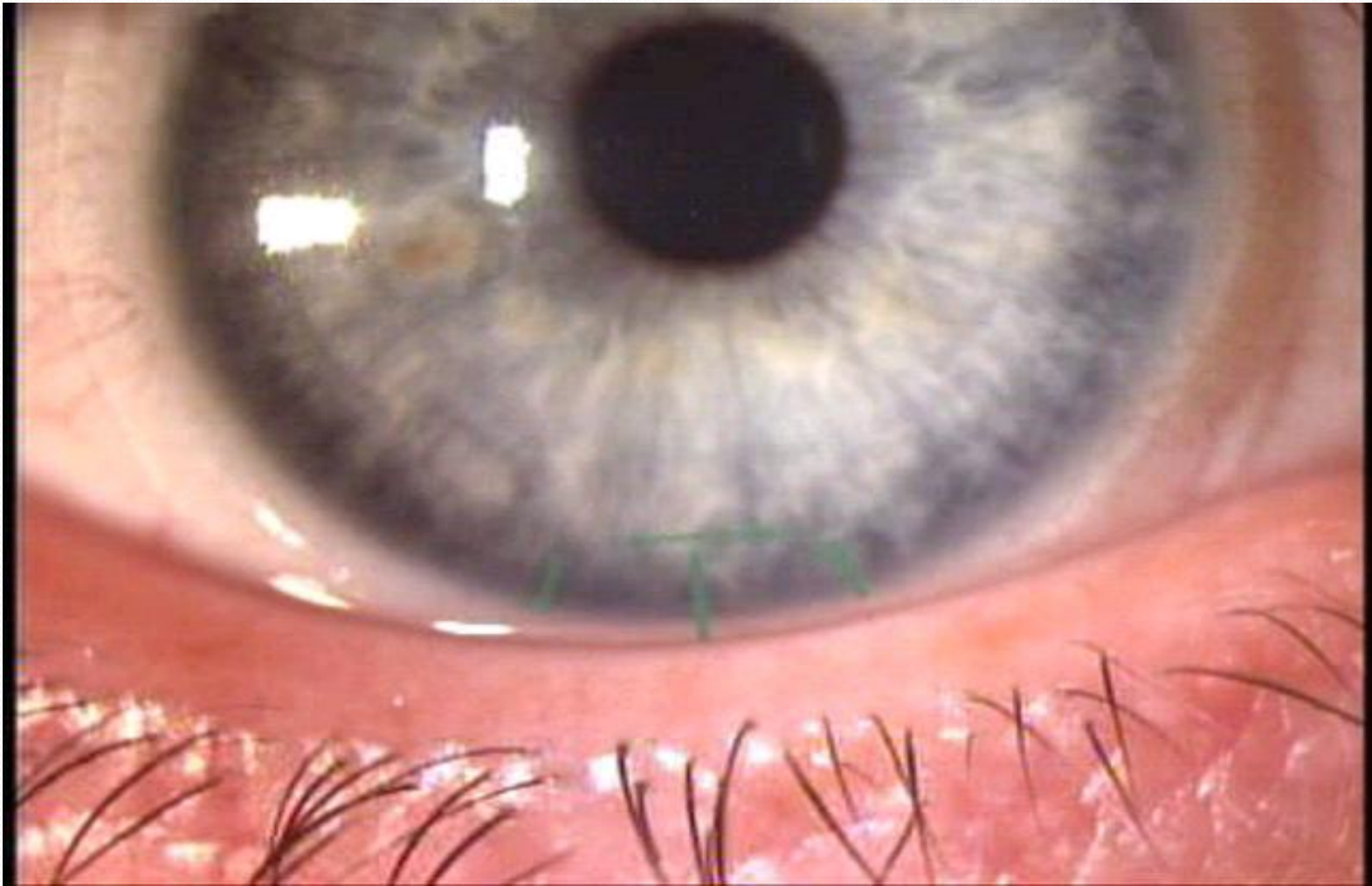
# CL insertion



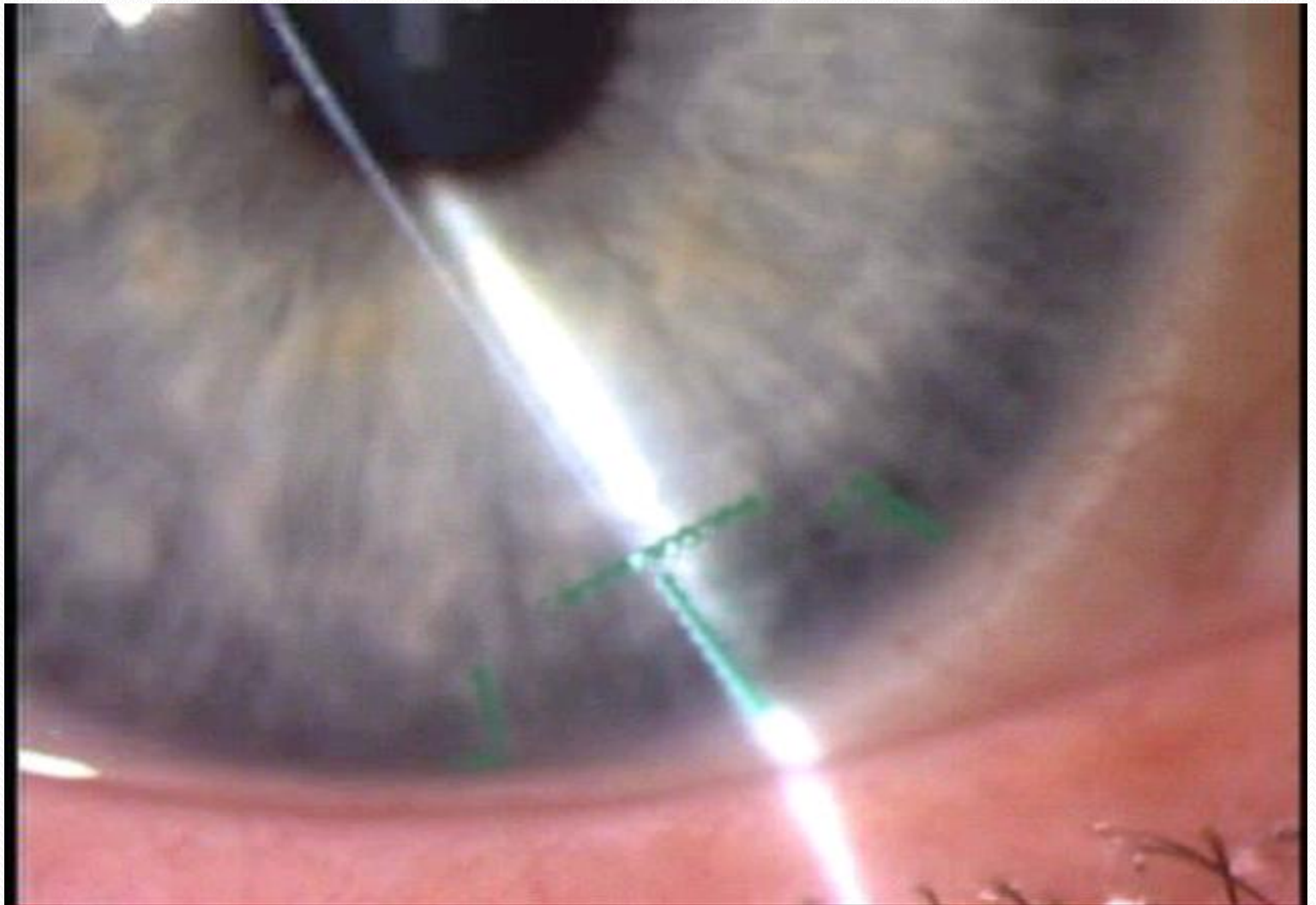
# Fit Assessment with TORIC CL

- Optimum
- Steep
- Flat
- Alignment of the axis
- Axis mislocation –LARS rule

# Soft toric alignment



# Soft toric misalignment of axis





# Vision fluctuation with soft toric



# Dispensing aspects

- Insertion and removal
- Do's and don't's of CL wear
- Need of compliance
- Adaptation time
- Follow up



# After care .....

- ?Why
- Important aspects to be taken care
- Problems that can occur





**THANK YOU**