

BE THE BEST IN  
CONTACT LENS  
EDUCATION...



JOIN IACLE

INTERNATIONAL ASSOCIATION OF CONTACT LENS EDUCATORS



## What is IACLE?

The International Association of Contact Lens Educators is the leading provider of educational and information resources essential to contact lens educators worldwide.

Our mission is to increase the number of qualified contact lens educators and improve the quality of contact lens teaching, thereby increasing the number of skilled contact lens practitioners throughout the world and facilitating the use of contact lenses worldwide, in partnership with Industry.

IACLE is a non-profit, non-political organisation welcoming contact lens educators from any eye care profession.

## What does IACLE do?

**IACLE develops and distributes high-quality resources and programs such as:**

- The New IACLE Contact Lens Course
- Distance Learning Program
- Fellowship of IACLE (FIACLE)
- Fellowship Exam
- Interactive Case Reports
- Student Trial Exam
- Web Lectures / Discussion Forums
- Research Updates
- IACLE Travel Awards
- IACLE Contact Lens Educator of the Year Awards

IACLE regularly conducts educational meetings and intensive training programs to raise the standard of contact lens knowledge and develop the presentation skills of educators.



## Who can join IACLE?

Membership is offered to those involved in contact lens education under two category types:

**Educator Members are those who are:**

- Full time or part time educators working at a recognised teaching institution(s)
- Significantly involved either part time or full time in the coordination, implementation and/or direction of the CL curriculum

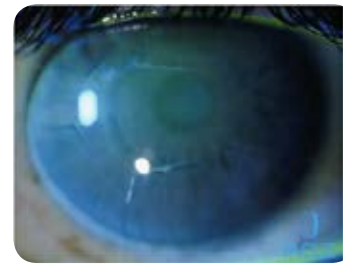
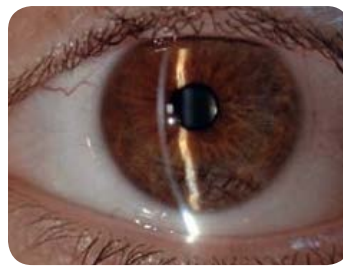
**Associate Members are those who are:**

- Positively contributing to CL education, but are not formally affiliated with a recognised institution
- Visiting faculty at a recognised institution
- Actively involved in IACLE activities and the promotion of CL education, and contribute positively to the association
- Industry representatives actively involved in the promotion of CL education, IACLE activities and/or contribute positively to the association

## How to join IACLE

Please visit the IACLE website to read more about IACLE membership and to download our application form – [www.iacle.org](http://www.iacle.org).

If you have any questions or would like additional information please contact IACLE at: [iacle@iacle.org](mailto:iacle@iacle.org).



## Why join IACLE?

### The many valuable benefits of IACLE membership include:

- Joining a global network of contact lens educators
- Essential resources such as the New IACLE Contact Lens Course
- IACLE-developed and donated resources via IACLE Resource Centres
- Assistance with curriculum development
- Effective student knowledge assessment and feedback
- Distance learning and continuing education opportunities
- IACLE Educator Meetings and Train-the-Trainer Programs
- Live online Web Lectures and Discussion Forums
- Monthly updates on IACLE activities, contact lens news and latest research findings
- Recognition of excellence (Fellowship of IACLE)
- Liaison with IACLE industry partners

## IACLE resources and programs

### The New IACLE Contact Lens Course (ICLC)

The ICLC is the longest established, most popular and most important of IACLE's teaching resources, and is used by its members in educational institutions worldwide. The course has been fully revised and updated by the world's leading authorities in contact lenses, to keep pace with developments in the contact lens field.

The New ICLC covers all aspects of contact lens education – from the anatomy of the cornea to the business of contact lens practice. The complete course consists of 6 modules and 33 lectures in PowerPoint format.

**The course is available exclusively to IACLE members.**

**NEW ICLC**

### Course Modules and Lectures

#### A. The Basics of Contact Lenses

- A1 Anatomy and Physiology of the Anterior Eye
- A2 History of Contact Lenses
- A3 Optics of Contact Lenses
- A4 Contact Lens Designs
- A5 Contact Lens Fabrication
- A6 Corneal Oxygenation in Contact Lens Wear

#### B. Contact Lens Fitting

- B1 Examining the Prospective Contact Lens Patient
- B2 Selecting Lens Type, Wear Mode, and Replacement Rate
- B3 Fitting Spherical GP Contact Lenses
- B4 Fitting Spherical Soft Contact Lenses
- B5 Correcting Astigmatism with Contact Lenses
- B6 Fitting SiHy CLs
- B7 The Dispensing Visit and After-Care
- B8 Contact Lenses for Sports
- B9 Presbyopic Contact Lens Options

#### C. Contact Lens Care

- C1 Contact Lens Contamination
- C2 CL Care and CL Care Products
- C3 Rigid CL Care
- C4 Hydrogel and Silicone Hydrogel CL Care

#### D. Complications

- D1 Defending the Ocular Surface in Contact Lens Wear
- D2 Rigid Contact Lens Complications
- D3 Soft Contact Lens Complications
- D4 Dry Eye and Contact Lenses

#### E. Advanced Contact Lens Practice

- E1 Children and Contact Lenses
- E2 Fitting Scleral and Mini-Scleral Contact Lenses
- E3 Myopia Control and Orthokeratology
- E4 Contact Lenses for Keratoconus
- E5 Special Applications of Contact Lenses
- E6 Advanced Clinical Techniques
- E7 Business Aspects of Contact Lens Practice

#### F. Myopia and its Management

- F1 Development of Ametropia
- F2 Methods of Controlling Myopia
- F3 Myopia Control Contact Lenses



## Supporting Resources

IACLE has developed interactive case reports to supplement the ICLC, which have a variety of uses including tutorials and lectures (to prime students on a topic or assess absorption of information), or as a self-study aid for students. These case reports are available for streaming in several languages from the IACLE website free of charge.

Video and image libraries, as well as a variety of resources contributed from members and industry, are also available to IACLE members via our website.

## What can IACLE do for you?

### Advance your Knowledge and Skills

Active IACLE members have the opportunity to improve their knowledge levels and teaching skills by participating in IACLE educational meetings and training programs.

The IACLE Distance Learning Program (DLP) assists educators to independently and systematically study the modules of the New IACLE Contact Lens Course and help prepare for the IACLE Fellowship Exam.

Resources such as monthly Research Updates help keep educators informed of the latest developments in contact lenses and anterior eye, and encourage evidence-based science and practice.

### Measure your Knowledge and Skills

The IACLE Fellowship Exam assesses educators' contact lens knowledge from both a practical and theoretical aspect. The exam provides an indication of those areas in which knowledge is stronger or weaker, and hence where further study is required.

IACLE Student Trial Exams provide students with the same feedback prior to their final year or qualifying examinations. They are also an excellent tool for educators to identify areas where additional time and/or content is needed in their contact lens curriculum.

### Achieve Fellow of IACLE Status

Candidates who successfully complete the Fellowship Exam are eligible to apply for Fellow of IACLE (FIACLE) status. Being awarded this prestigious designation acknowledges a member as having achieved a high level of contact lens knowledge and skill.



Members who have achieved FIACLE status are considered to be leaders in their field and IACLE relies on these members to assist in furthering the aims of IACLE at a higher level in their countries and regions. They are often called upon to mentor other colleagues and to develop and deliver high quality continuing education for practitioners.

**Join us now and become a member  
of our worldwide community**



**IACLE**  
International Association  
of Contact Lens Educators

Email: [iacle@iacle.org](mailto:iacle@iacle.org)  
Web: [www.iacle.org](http://www.iacle.org)