

SIMPLE FITTING GUIDE

PATIENT SELECTION

- K's between 40 and 46 diopters
- Rx up to -5.00
- up to 1.5 diopters with the rule astigmatism

PRE-FITTING EXAM

- K's (Auto, Manual, or SimK's)
- Topography
- Refraction
- Slit lamp evaluation
- HVID
- Patient history

INITIAL LENS DISPENSE

- Check position with NaFl - Bullseye pattern.
Subjective evaluation to ensure tear exchange and basic positions. No lens changes are recommended based on NaFl.
- Minimal movement (1 - 2 mm)
- O/R with lenses on - should be approximately +/- 0.50 diopter
- Review insertion/removal with patient

DAY 1 MORNING VISIT

- VA without lenses
- Slit lamp evaluation
- Refraction
- Topography

RECOMMENDED FOLLOW-UP SCHEDULE

1 Day | 1 Week | 1 Month | 6 Months | Annual

At least 1 week of wear should occur along with a repeated unacceptable result before any lens changes are made. (It is normal for a patient to experience a bad night occasionally.)

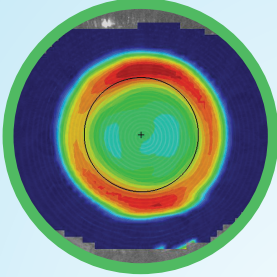
All lens design modifications are based on patient topographic changes and refractive requirements, making both pieces of data necessary.



Empirically Fit, Clinically Proven

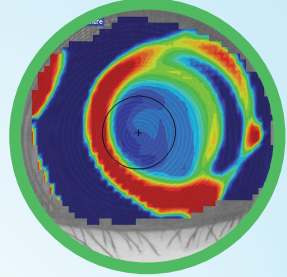
TOPOGRAPHY FIT EVALUATION

BULLSEYE PATTERN



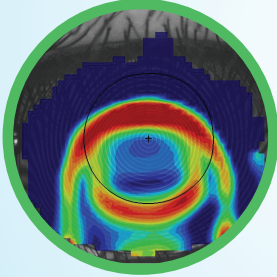
Good Centration
Good Treatment Zone

LATERAL CRESCENT



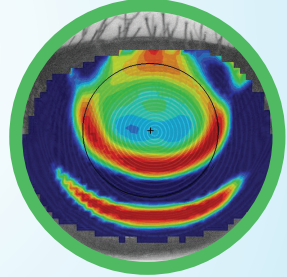
Nasal or Temporal
Increase Lens Diameter by 0.4mm

FROWN



Lens is Low = Too Tight
Flatten Ac1 and Ac2 by 0.1mm

SMILE



Lens is High = Too Loose
Steepen Ac1 and Ac2 by 0.1mm

Emerald is FDA approved for overnight correction of myopia and mild astigmatism. It has been the easy, safe and non-surgical alternative option of choice for almost a million eyes around the world with outstanding results.

For further fitting assistance, please call 1-800-477-9396
and we will be happy to help you.



FDA APPROVED
P040029 & P010062

www.euclidsys.com

